

W i f i - s o f t

DATASHEET

UniBox U-2500 Network Access and Bandwidth Controller **ver. 3.0**

UniBox is an intelligent access controller or hotspot gateway that provides complete control over your wireless network. UniBox allows network administrators centrally manage wired and wireless network, avoid unauthorized access and track realtime activity on the network.



www.wifi-soft.com



+91 (20) 3018 5577



sales@wifi-soft.com

W i f i - s o f t

UniBox U-2500 Network Access and Bandwidth Controller **ver. 3.0**

D A T A S H E E T

UniBox U-2500

NETWORK ACCESS AND BANDWIDTH CONTROLLER



UniBox U-2500 is an all-in-one controller appliance that combines the functions of a wireless LAN controller, hotspot gateway, AAA server, web server, load balancer, web logger, VPN server, policy server and firewall in a single box. It also comes with comprehensive reporting and analytics tools for analyzing and tracking network activity of all users. UniBox can be deployed as a standalone appliance or can function with WiFiLAN OSS/BSS.

UniBox U-2500 belongs to the family of UniBox controllers that is specially designed for managing network access in large venues like large offices, airports, convention centers, city wide wifi, universities and public parks. U-2500 is capable of handling 2500 concurrent user sessions and is built on a reliable Linux platform to provide high availability and performance for large enterprise networks.

CAPTIVE PORTAL



NEW & IMPROVED FEATURES



Upgraded GUI



Automatic Cloud Sync



LDAP/AD Integration



Better Throughput



Remote Sys Logger



Virtual PMS



AP Controller & NMS



Automatic Software Upgrades



Social Media Integration



Multiple Hotspots



Bandwidth Monitoring



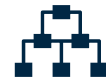
VPN Server



Enterprise Configuration Enabled



External DHCP Support



VLAN Enabled



Group-based Content Filtering



Traffic Analysis



Firewall



Multi-WAN & Load Balancer



Configurable Portal Templates



Branch Networking

FEATURES

Universal Controller

- ▶ Wired/Wireless Access Controller
- ▶ Captive Portal System
- ▶ Hotspot Billing
- ▶ Built-in AAA/RADIUS Server
- ▶ On-board DHCP Server
- ▶ User Database

Networking

- ▶ Multiple LAN Subnets
- ▶ VLAN Support
- ▶ WAN Load Balancing & Failover
- ▶ VPN Server
- ▶ Branch Networking
- ▶ Group-based Routing
- ▶ Network Monitoring

User Management

- ▶ Automated User Provisioning
- ▶ Per-User Rate Limits
- ▶ MAC-based Authentication
- ▶ Approval-based Registrations
- ▶ User Groups
- ▶ LDAP/AD/GSuite Integration

Policy Manager

- ▶ Bandwidth Rate Limiting
- ▶ Time and Data Quota Limits
- ▶ Dynamic Bandwidth Allocation
- ▶ Group-based Policies
- ▶ Fair Usage Policy
- ▶ Date/Time Policies

Reporting

- ▶ Online Users
- ▶ Usage Reports
- ▶ Social Media Profiling
- ▶ Revenue Reports
- ▶ PMS & Voucher Reports
- ▶ Network Monitoring Reports
- ▶ Automated Reporting

Hotspot Billing

- ▶ Billing Plans
- ▶ Payment Gateway Integration
- ▶ Access Codes / Vouchers
- ▶ Integration with Multiple PMS Vendors
- ▶ Tiered Billing
- ▶ Automated Emails

AP Controller

- ▶ Management Dashboard
- ▶ AP Provisioning
- ▶ Central AP Configuration
- ▶ Auto-discovery
- ▶ Heatmaps
- ▶ Traffic Analysis

Captive Portals

- ▶ Template-based Captive Portals
- ▶ Multiple Login Methods
- ▶ On-based Portal Server
- ▶ Two-Factor (SMS/OTP) Logins
- ▶ Social Media Login

Compliance

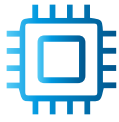
- ▶ Group-based URL Filtering
- ▶ Web Logging & Archiving
- ▶ TRAI/DoT Compliance
- ▶ User Isolation
- ▶ MAC Blacklist

WiFi Advertisement

- ▶ Portal Page Advertisement
- ▶ Multimedia Content
- ▶ Targeted Advertisement
- ▶ Pre-login and Interstitial Ads
- ▶ Advertisement Reports

Other

- ▶ Remote Syslogs
- ▶ Automatic Updates
- ▶ Role-based Administration
- ▶ Audit Trails
- ▶ Diagnostic Tools



TECHNICAL SPECIFICATIONS

Interfaces

6 Ethernet Port (RJ-45) – 10/100/1000 base T/Tx
2 SFP + 10G ports
Intel chipset
Console port
2 USB Ports

Networking

Static & Dynamic Routing
DNS & DHCP Server
Layer 2 isolation
VLAN Tagging
SNMP v2c support
NTP (RFC 1305) support

Users

Supports 2500 concurrent sessions
Unlimited offline users

Power Rating

Input Voltage :	110-240V, AC
Power Consumption :	220W
Heat Dissipation :	300 BTU

Compliance

CE Emission
FCC Class A, RoHS

Form Factor	1U Rackmount
Physical Dimensions	430 x 380 x 45mm
Net Weight	5.53 Kgs
Color	Light silver black

Operating Temperature	-10°C to 60°C
Non-condensing Humidity	5% - 95%
Vibrations	0.5g rms/5-500HZ/random
Fan cooling structure	Yes

Physical Property

Dimensions

Environmental

IDEAL FOR



Telecom



5 Star Hotels



Healthcare



Universities



convention centers



Airports



Public WiFi

Wifi-soft LLC
815-A Brazos St, Suite 326
Austin, Texas - 78701 U.S.A.

Wifi-soft Solutions Pvt. Ltd.
C-410, Teerth Technospace
Baner, Pune - 411045, India

Wifisoft Global FZE
P.O.Box - 120360,
Sharjah, UAE