

Wifi-soft
DATASHEET

UniBox U-1000
Network Access and
Bandwidth Controller
ver. 3.0

UniBox is an intelligent access controller combined with comprehensive billing and bandwidth management solution. UniBox allows network administrators centrally manage wired and wireless network, avoid unauthorized access and track real-time activity on the network.



www.wifi-soft.com



+91 (20) 3018 5577



sales@wifi-soft.com

Wifi-soft

UniBox U-1000
Network Access and
Bandwidth Controller
ver. 3.0

DATASHEET

UniBox U-1000

NETWORK ACCESS AND BANDWIDTH CONTROLLER



UniBox U-1000 is an all-in-one controller appliance that combines the functions of a wireless LAN controller, hotspot gateway, AAA server, web server, load balancer, web logger, VPN server, policy server and firewall in a single box. It also comes with comprehensive reporting and analytics tools for analyzing and tracking network activity of all users. UniBox can be deployed as a standalone appliance or can function with WiFiLAN OSS/BSS.

UniBox U-1000 belongs to the family of UniBox controllers that are specially designed for managing network access in large venues like airports, 5-star hotels, schools, universities and public hotzones. U-1000 is capable of handling 1000 concurrent user sessions and is built on a reliable Linux platform to provide high availability and performance for medium-sized to large-sized networks.

CAPTIVE PORTAL



NEW & IMPROVED FEATURES



Upgraded GUI



Automatic Cloud Sync



LDAP/AD Integration



Better Throughput



Remote Sys Logger



Virtual PMS



AP Controller & NMS



Automatic Software Upgrades



Social Media Integration



Multiple Hotspots



Bandwidth Monitoring



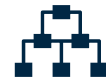
VPN Server



Enterprise Configuration Enabled



External DHCP Support



VLAN Enabled



Group-based Content Filtering



Traffic Analysis



Firewall



Multi-WAN & Load Balancer



Configurable Portal Templates



Branch Networking

FEATURES

Universal Controller

- ▶ Wired/Wireless Access Controller
- ▶ Captive Portal System
- ▶ Hotspot Billing
- ▶ Built-in AAA/RADIUS Server
- ▶ On-board DHCP Server
- ▶ User Database

Networking

- ▶ Multiple LAN Subnets
- ▶ VLAN Support
- ▶ WAN Load Balancing & Failover
- ▶ VPN Server
- ▶ Branch Networking
- ▶ Group-based Routing
- ▶ Network Monitoring

User Management

- ▶ Automated User Provisioning
- ▶ Per-User Rate Limits
- ▶ MAC-based Authentication
- ▶ Approval-based Registrations
- ▶ User Groups
- ▶ LDAP/AD/GSuite Integration

Policy Manager

- ▶ Bandwidth Rate Limiting
- ▶ Time and Data Quota Limits
- ▶ Dynamic Bandwidth Allocation
- ▶ Group-based Policies
- ▶ Fair Usage Policy
- ▶ Date/Time Policies

Reporting

- ▶ Online Users
- ▶ Usage Reports
- ▶ Social Media Profiling
- ▶ Revenue Reports
- ▶ PMS & Voucher Reports
- ▶ Network Monitoring Reports
- ▶ Automated Reporting

Hotspot Billing

- ▶ Billing Plans
- ▶ Payment Gateway Integration
- ▶ Access Codes / Vouchers
- ▶ Integration with Multiple PMS Vendors
- ▶ Tiered Billing
- ▶ Automated Emails

AP Controller

- ▶ Management Dashboard
- ▶ AP Provisioning
- ▶ Central AP Configuration
- ▶ Auto-discovery
- ▶ Heatmaps
- ▶ Traffic Analysis

Captive Portals

- ▶ Template-based Captive Portals
- ▶ Multiple Login Methods
- ▶ On-based Portal Server
- ▶ Two-Factor (SMS/OTP) Logins
- ▶ Social Media Login

Compliance

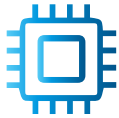
- ▶ Group-based URL Filtering
- ▶ Web Logging & Archiving
- ▶ TRAI/DoT Compliance
- ▶ User Isolation
- ▶ MAC Blacklist

WiFi Advertisement

- ▶ Portal Page Advertisement
- ▶ Multimedia Content
- ▶ Targeted Advertisement
- ▶ Pre-login and Interstitial Ads
- ▶ Advertisement Reports

Other

- ▶ Remote Syslogs
- ▶ Automatic Updates
- ▶ Role-based Administration
- ▶ Audit Trails
- ▶ Diagnostic Tools



TECHNICAL SPECIFICATIONS

Interfaces

6 Ethernet Port (RJ-45) – 10/100/1000 base T/Tx
2 Optional SFP + 10G ports
Intel chipset
Console port
2 USB Ports

Networking

Static & Dynamic Routing
DNS & DHCP Server
Layer 2 isolation
VLAN Tagging
SNMP v2c support
NTP (RFC 1305) support

System Performance

Concurrent User Sessions : 1000 Sessions
Data Throughput : 861 Mbps (auth)
930 Mbps (no-auth)

Power Rating

Input Voltage : 230V AC
Power Consumption : 10W
Heat Dissipation : 300 BTU

Compliance

CE Emission
FCC Class A, RoHS

Form Factor: Rackmount - 10
Physical Dimensions: 482 x 680 x 44 mm
Net Weight : 4 kgs or 8.8 lbs (approx)

Operating Temperature : 5°C to 50°C
Non-condensing Humidity : 8% - 90%

Physical Property

Dimensions

Environmental

IDEAL FOR



Telecom



Hotels & Enterprises



Healthcare



Universities



Public Places



Airports



Transport

Wifi-soft LLC
815-A Brazos St, Suite 326
Austin, Texas - 78701 U.S.A.

Wifi-soft Solutions Pvt. Ltd.
C-410, Teerth Technospace
Baner, Pune - 411045, India

Wifisoft Global FZE
P.O.Box - 120360,
Sharjah, UAE